

Specifications

MK20RC

Features	Type	Descriptions
Pan & Tilt Joystick	Analog	Variable speed (3 speed); reversible Y-Axis (Tilt)
Focus	Rotary Knob (Manual)	Variable speed knob
	Auto	Button, enable auto focus.
Zoom	Auto	Variable speed (3 speed)
	Hi	Fixed high speed zoom
	Lo	Fixed low speed zoom
Camera Support		5
Preset Memory		50
Tally Light	DA15	x2, PGM & PVW
Communication	RJ-45	RS422 x5
	RJ-45	RS485 x1 (up to 1000m, Daisy Chain 5 cameras)
Top Panel Functions		WHT BAL, AE, Shutter, Iris, Control Enable, Mute, Preset 1~10, Set, Camera 1~5 Select, White Balance, Gain, AWC, Scene, Menu, Bank, Enter, Save, ESC, Del, F1, F2, Pan, Tilt, Focus and Zoom
Power		DC 12V TBD A, external power adapter
Dimensions	W x D x H	210mm x 180mm x 66mm

MK20HD

Features	Descriptions	
Sensor	Type	1/2.8" Type Exmor™ CMOS
	Pixels	HD 2.4MPixels
	Illumination	0.5 Lux @ F1.6
	White Balance	Auto & Manual
	Gain Control	Auto
	Back-light Compensation	On/Off
	E-Shutter	1/1 to 1/10,000 sec
	S/N Ratio	>50 dB
Lens	Focus	F=4.7-94mm F1.6-2.8
	Iris	Auto/Manual
	Zoom	20x Optical
Video Output	HDMI, HD-SDI and CAT5/ 6 HDMI	
Resolution	1080p30	
Remote Control Interface	RS422, RS485	
Communication Protocol	VISCA	
Baud Rate	9600/115200/384000 bps	
Preset	IR Remote Control: 10 ; Keyboard Control: 255	
Power Off Protection	Saved scanning or patrol line settings automatically before power off.	
Speed Matching	Slow down camera motion speed while camera zooming in.	
Pan Speed	1-200 deg per second	
Tilt Speed	1-150 deg per second	
Pan Rotation Angle	Continuous 360 deg	
Tilt Rotation Angle	115 deg	
Boundary Scan	0-355 deg (Programming)	
Power Supply	DC 12V ±10%, 3A	
Operating Temperature	0-50° C	
Humidity	0-95% RH	

MK20RC & MK20HD

PTZ Camera Remote Control. Multi-Format HD PTZ Camera.

MK20HD

- Ultra quiet direct pan and tilt drives
- Pan/tilt rotation angle: Horizontal 360° / Vertical 115°
- 20x optical zoom
- HDMI/DVI and HD-SDI output formats
- Supports RS422 and RS485 remote control
- CAT5/6 HDMI Output
- 1/2.8" CMOS 2.4 Megapixel Sensor



MK20RC

- Controls up to 5 MK20HD cameras
- 50 camera presets
- Supports RS-422 and RS-485 for up to 3200 feet (MK20RC-1 supports RS-422 and LAN for IP and serial connections)
- Variable pan, tilt, zoom and focus speed control by analog levers
- Reversible Y-axis Joystick
- Tally light indicators
- Compatible with select Sony VISCA PTZ cameras



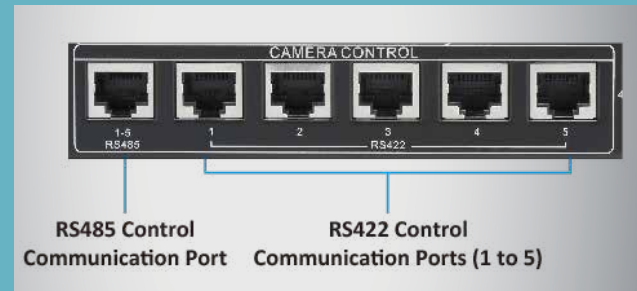
Wide Range of Compatibility

The MK20RC fully supports VISCA remote protocol, making it compatible with Sony's existing remote camera models. New user is guaranteed a stress free implementation into an existing setup nor worry about future remote PTZ cameras upgrade and compatibility issues.



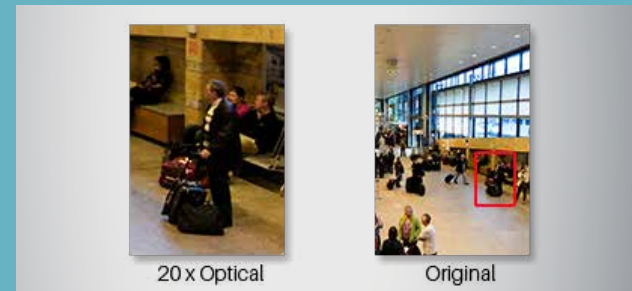
Communication Port Select Switch

Features a Communication Port Select Switch for instant switch between RS422 and RS485 standard serial interfaces allowing point-to-point mode or daisy-chain mode.



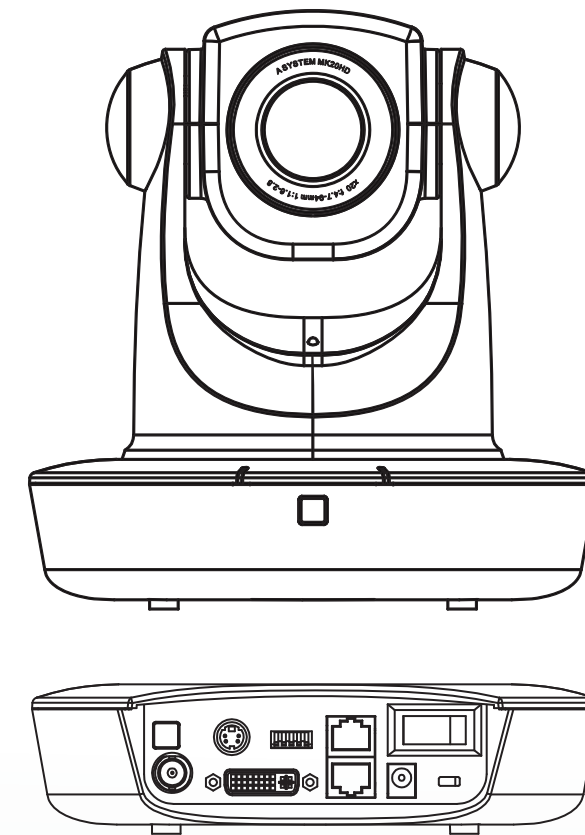
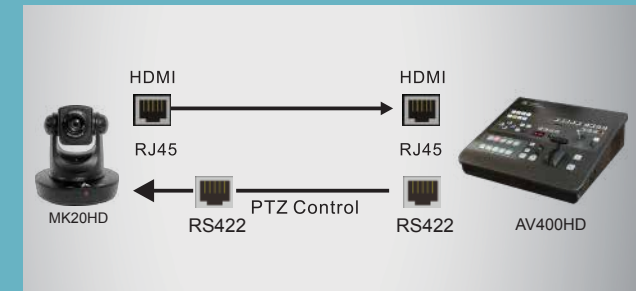
20x Optical Zoom

MK20HD is a compact, robotic, full HD camera integrated with a pan-tilt head and featuring a 1/2.8" HD 2.4 Megapixel CMOS image sensor and a wide focal length of 1.6 to 2.8 coupled with 20x optical zoom.



Long Range Signal Transmission

MK20HD supports RS422 and RS485 standard serial interface for long range signal transmission for up to 1000 meter

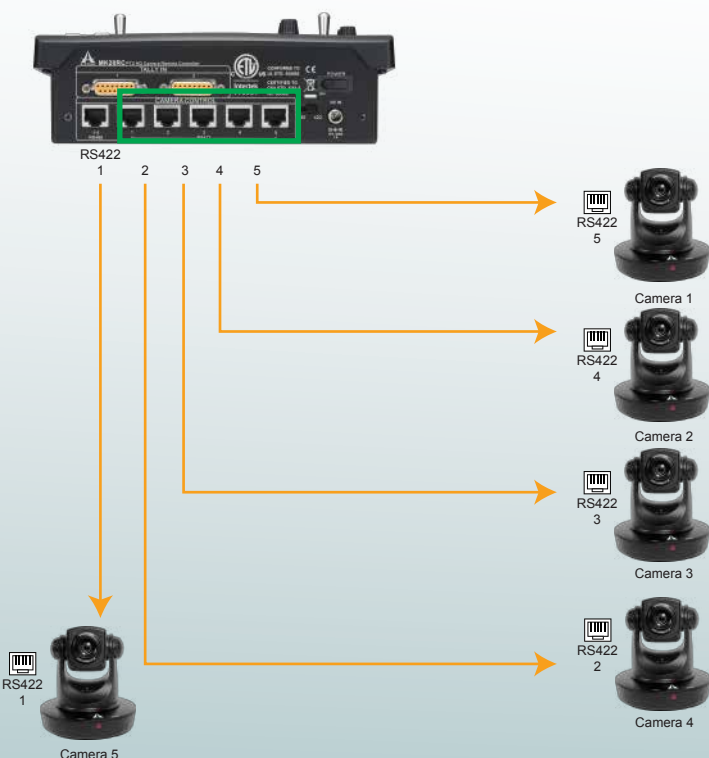


Asystems offers the MK20HD multi-directional full high-definition camera for use with the AV series video switchers and editing consoles. The unit offers real-time PTZ with wide rotation angle as well as a 20x optical zoom. Output connection is achieved via CAT 5 digital video in DVI and HDMI formats. The MK20HD also supports HD-SDI (optional). The camera can be controlled via RS422 and RS485 protocols and is compatible with the Asystems MK20RC remote control.

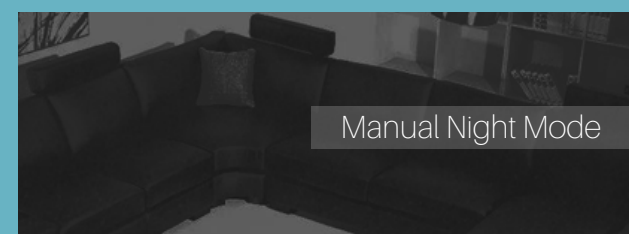
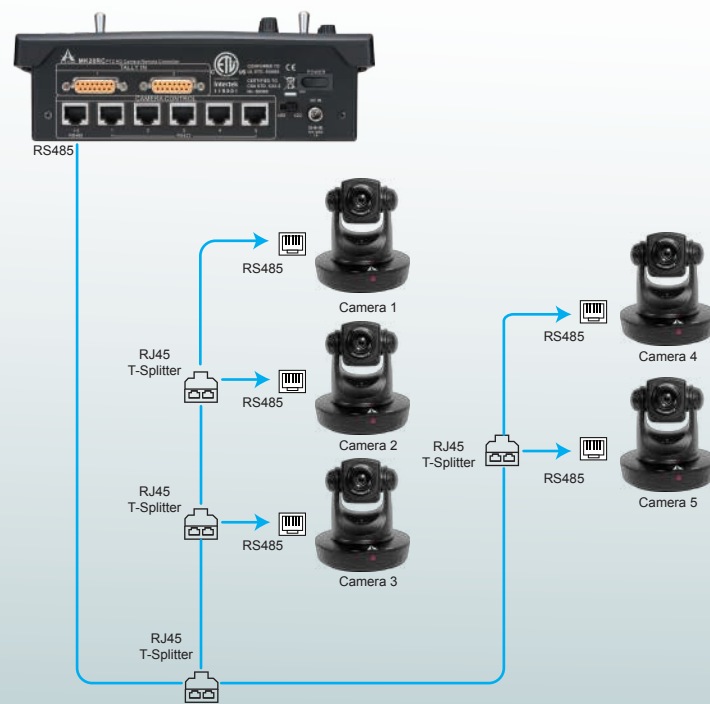


*IR Remote included with the purchase of MK20HD.

Point to Point Control Configuration



Daisy Chain Control Configuration



Full HD Video Output

Featuring an uncompromising and superior optical 20x zoom lens, the MK20HD achieves true high-quality 1080p video shooting that overflows with ambience.

